













-  City of Coronado Boundary
-  Project Study Area
- Survey Tier**
-  Tier 1
-  Tier 2
-  Tier 3

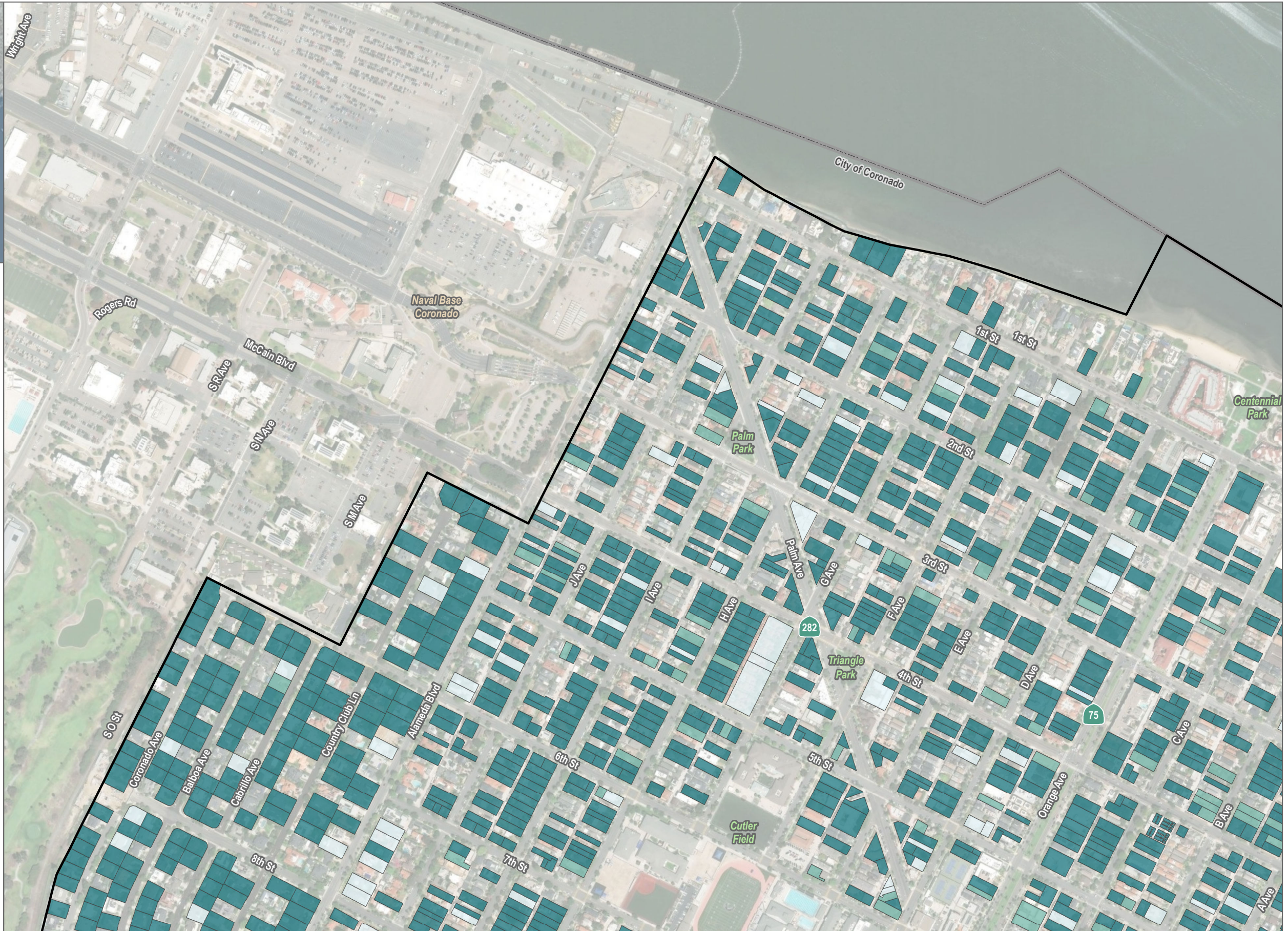


SOURCE: SANDAG 2019, Maxar 2023, OpenStreetMap



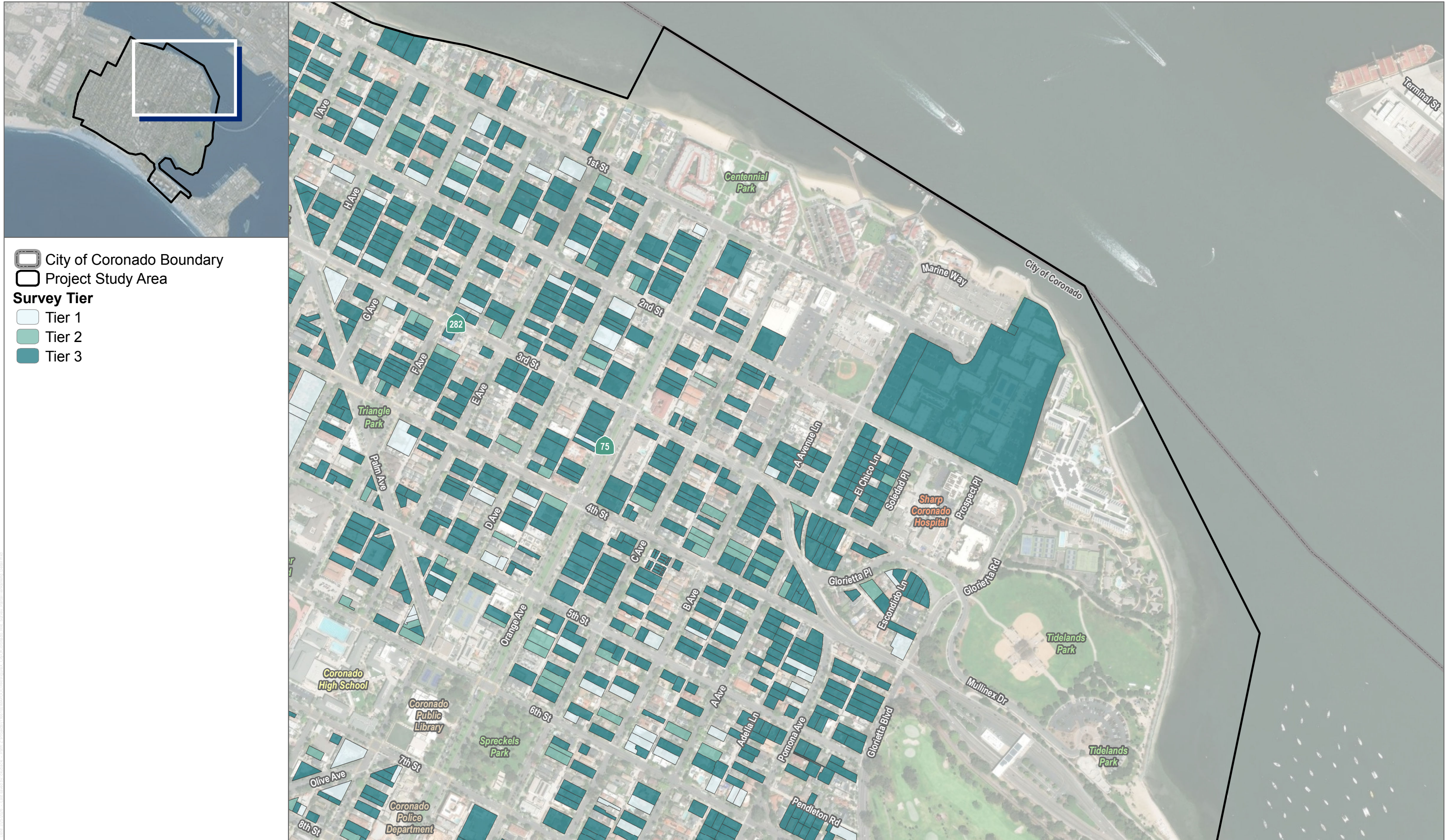


-  City of Coronado Boundary
-  Project Study Area
- Survey Tier**
-  Tier 1
-  Tier 2
-  Tier 3



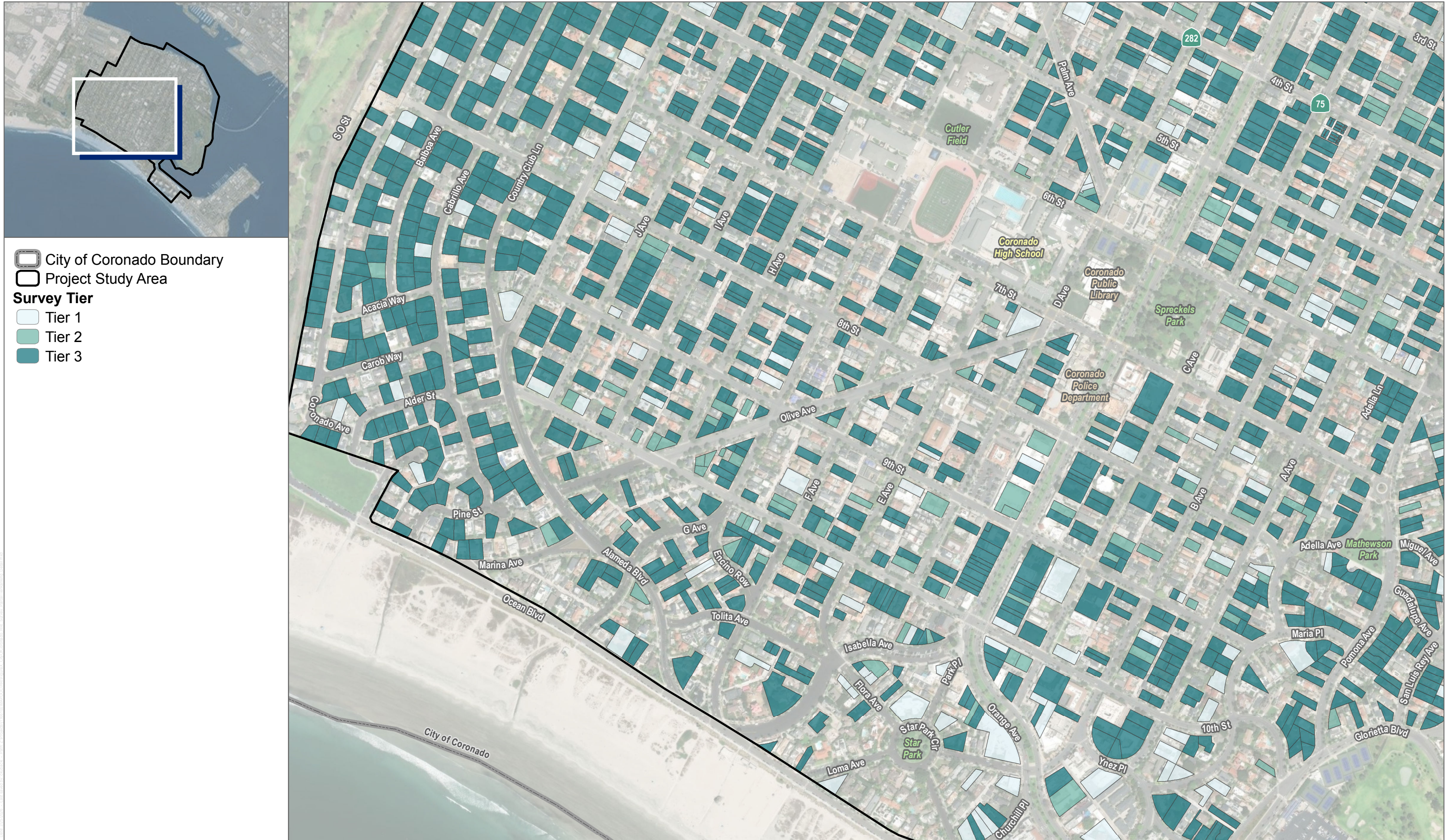
SOURCE: SANDAG 2019, Maxar 2023, OpenStreetMap










SOURCE: SANDAG 2019, Maxar 2023, OpenStreetMap





-  City of Coronado Boundary
-  Project Study Area
- Survey Tier**
-  Tier 1
-  Tier 2
-  Tier 3

SOURCE: SANDAG 2019, Maxar 2023, OpenStreetMap










SOURCE: SANDAG 2019, Maxar 2023, OpenStreetMap

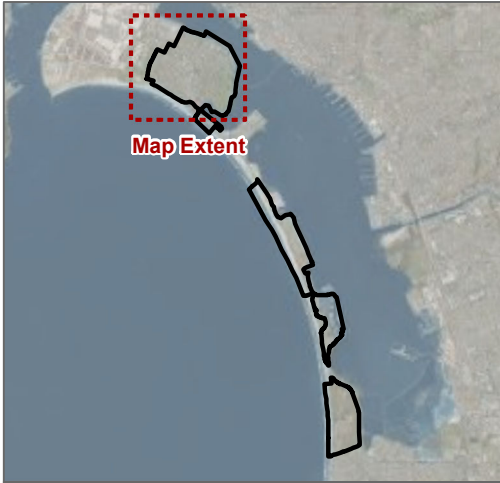




-  City of Coronado Boundary
-  Project Study Area
- Survey Tier**
-  Tier 1
-  Tier 2
-  Tier 3

SOURCE: SANDAG 2019, Maxar 2023, OpenStreetMap





- City of Coronado Boundary
- Project Study Area
- Parcel Boundary
- Survey Tier**
- Tier 1
- Tier 2
- Tier 3



SOURCE: Esri World Imagery 2024, SANGIS 2022, OpenStreetMap



Survey Extent Overview

City of Coronado Historic Resources Inventory Survey Findings